

E120 Electric



The **E120 Electric Bus** carries more than 70 people and significantly expands the service possibilities of the of the electric bus range.

The **E120 Electric** was designed in collaboration with **Industria Italiana Autobus** using the **Citymood** 12-metre frame and the **Rampini** electrical systems.

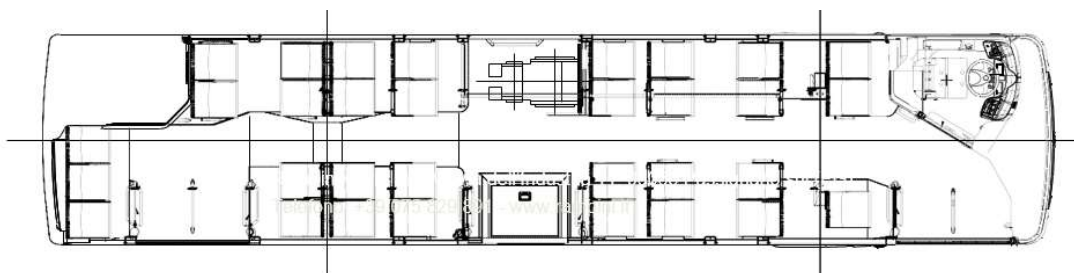
The whole electric drive system, which uses lithium ferrite cells, was entirely designed and produced by **Rampini**, along with the battery control, and the individual cells are monitored by a sophisticated management system (BMS), also produced by **Rampini**.

Dimensions and weights

Length	12.100 mm.
Width	2.550 mm.
Height	3.393 mm.
Front overhang	2.800 mm.
Rear overhang	3.400 mm.
Wheelbase	5.900 mm.
Turning radius	20.976 mm.
Rear axle – max load	12.000 kg
Front axle – max load	7.200 kg
MTT	19.000 kg
Kneeling	70 mm.

Places available

Seated	32	32
Standing	37	40
Disabled	1	0
Driver	1	1
TOTAL	71	73



E120 Electric



Motor

Siemens 1DB2016 liquid cooled with permanent magnets

Max power 160kW

Performance

Max speed >80 km/h

Max incline >18

Electric drive system

188 lithium-ferrite cells, 3.2V, 300Ah, 180 kWh, or 400Ah-240 kWh, Rampini BMS with active balancing system and automatic heating

Brakes

Regenerative cell braking systems, ABS, ASR, EBS (ESC)

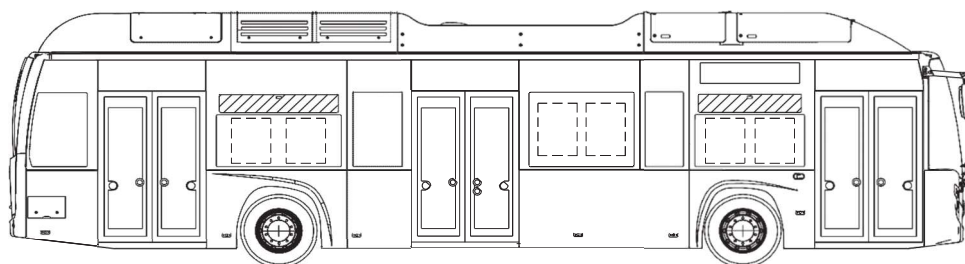
Autonomy (urban cycle)

about 120/150 km

Fast-charging possible

Climate control

Electric heating power 2,300-14,000 W,
Air-conditioning power 6,700-15,200 W,
Air-flow rate > 4.000 m³/h



Suspensions

neumatic with electronically controlled levelling (ECAS)

Doors

3 door pivoting or sliding requirement with pneumatic actuators, 1100-mm double-leaf, with anti-crushing safety system

Electrical System

Multiplex Can Bus TEQ

Axles

Front axle with independent ZF RL75 EC wheels,
Rear axle ZF AV 132

